

TECHNICAL FEATURES

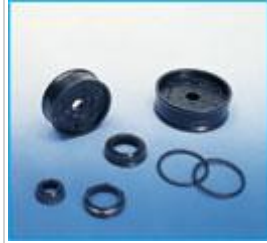
Caps in aluminium light alloy die cast, truck bush of piston rod in steel covered by plastic resin self-lubricating (P.T.F.E.)



Group of end of stroke adjustable cushion composed by pin with triangular milling and fluctuating and self centre seal.



Seals in nitrile rubber anti oil and polyurethane.



Piston rod in steel C45 ground and chromium plated.



TECHNICAL DATA

Maximum operating pressure : 10 bar.

Fluid : filtered air with or without lubrication.

Temperature : -20°C ÷ +70°C

Pressione mas

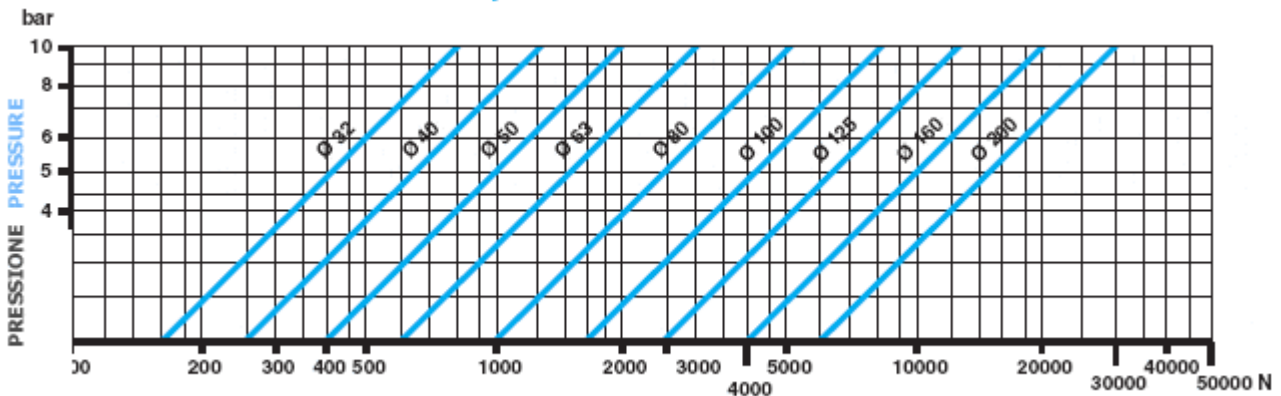
Fluido: aria filt

Temperatura:

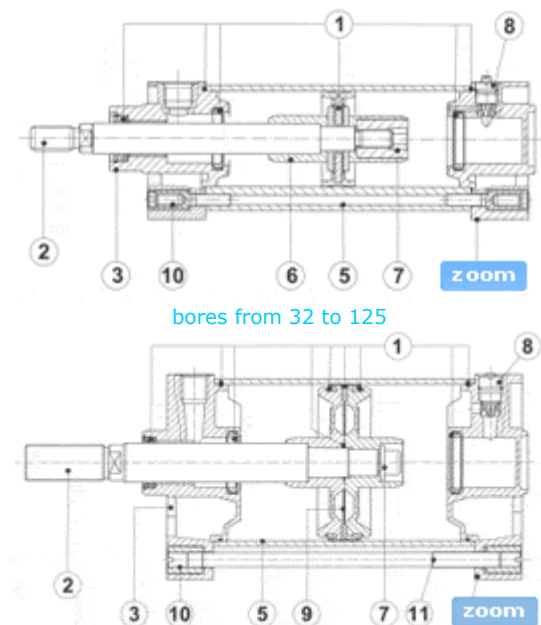
MANUFACTURING VARIANTS (variants can be combined)

NX	Rolled stainless steel AISI 304 (X5CrNi1810).
AX	Rolled stainless steel AISI 304 (X5CrNi1810), tie rods and nuts in stainless steel AISI 304.
HR	Rolled stainless steel AISI 304 (X5CrNi1810), tie rods and nuts in stainless steel AISI 304, covering with epoxy dust.
AR	Low friction.
FKM	With all seals in Viton (FKM).
FKMS	With piston rod seal in Viton (FKM).

THRUST FORCES



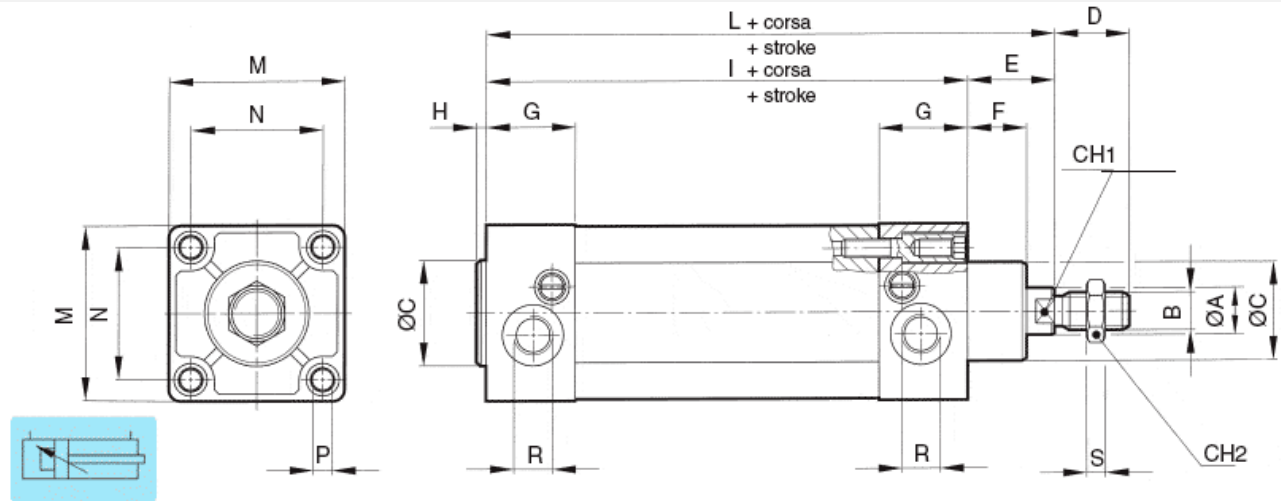
PNEUMATIC CYLINDERS: CLILNDERS series CNOMO – spare parts / components



ITEM	QUANTITY	MODEL	DESCRIPTION
1	1	SG	Seals
2	1	ST	Piston rod
3	1	TA	Front end cap
4	1	TP	Rear end cap
5	1	CM	Barrel
6	2	OG	Ogive
7	1	GD	Ring nut or screw nut
8	2	DC	Cushioning group
9	1	PT	Piston
10	4	TR	Tie rod
11	4	VT	Bolt for caps fixing
12	1	DS	Piston rod bolt

DIMENSIONS

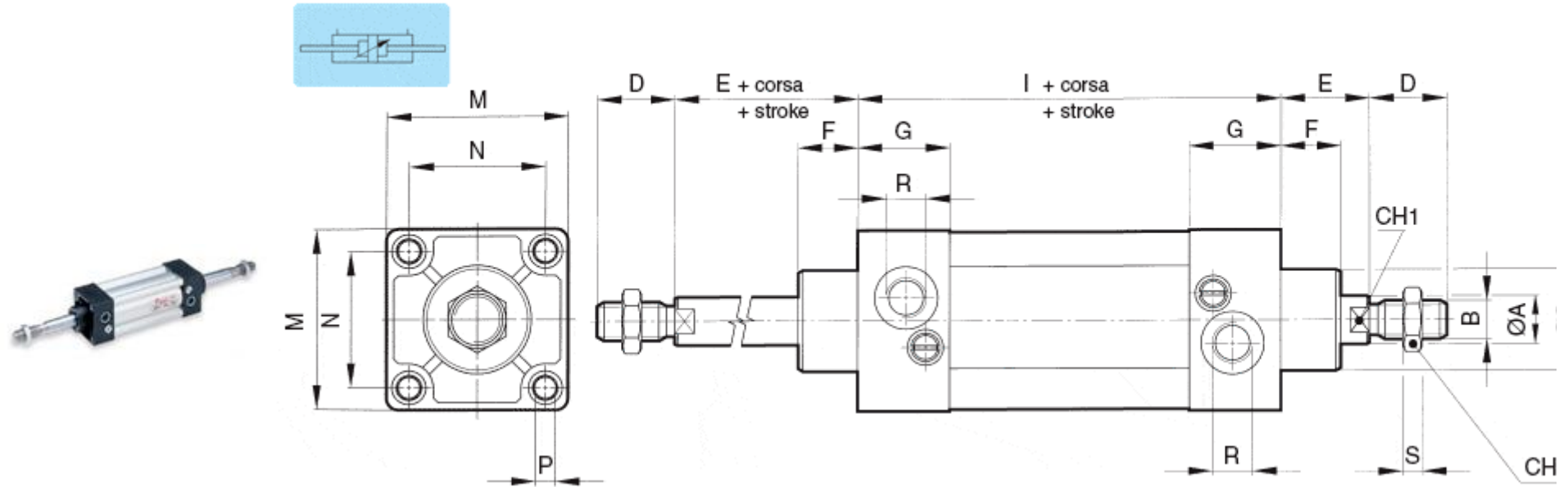
CN SERIE standard



Bore size mm	A	B	C e9	D	E	F	G	H	I	L	M	N	P	R	S	CH1	CH2	Ø Piston rod
32	12	M10x1,5	25	20	25	15	26	3	80	105	45	33	M6	G1/8	5	8	17	12
40	18	M16x1,5	32	36	34	15	36	3	110	144	52	40	M6	G1/4	8	13	24	18
50	18	M16x1,5	32	36	34	15	36	4	110	144	65	49	M8	G1/4	8	13	24	18
63	22	M20x1,5	45	46	39	20	40	4	125	164	75	59	M8	G3/8	10	17	30	22
80	22	M20x1,5	45	46	39	20	40	5	125	164	95	75	M10	G3/8	10	17	30	22
100	30	M27x2	55	63	47	20	45	6	145	192	115	90	M10	G1/2	13,5	22	41	30
125	30	M27x2	55	63	47	20	45	6	145	192	140	110	M12	G1/2	13,5	22	41	30
160	40	M36x2	65	85	50	25	47,5	8	180	230	180	140	M16	G3/4	18	32	55	40
200	40	M36x2	65	85	50	25	47,5	8	180	230	220	175	M16	G3/4	18	32	55	40



CNP SERIES



Bore size mm	A	B	C e9	D	E	F	G	H	I	L	M	N	P	R	S	CH1	CH2	Ø Piston rod
32	12	M10x1,5	25	20	25	15	26	3	80	105	45	33	M6	G1/8	5	8	17	12
40	18	M16x1,5	32	36	34	15	36	3	110	144	52	40	M6	G1/4	8	13	24	18
50	18	M16x1,5	32	36	34	15	36	4	110	144	65	49	M8	G1/4	8	13	24	18
63	22	M20x1,5	45	46	39	20	40	4	125	164	75	59	M8	G3/8	10	17	30	22
80	22	M20x1,5	45	46	39	20	40	5	125	164	95	75	M10	G3/8	10	17	30	22
100	30	M27x2	55	63	47	20	45	6	145	192	115	90	M10	G1/2	13,5	22	41	30
125	30	M27x2	55	63	47	20	45	6	145	192	140	110	M12	G1/2	13,5	22	41	30
160	40	M36x2	65	85	50	25	47,5	8	180	230	180	140	M16	G3/4	18	32	55	40
200	40	M36x2	65	85	50	25	47,5	8	180	230	220	175	M16	G3/4	18	32	55	40

